

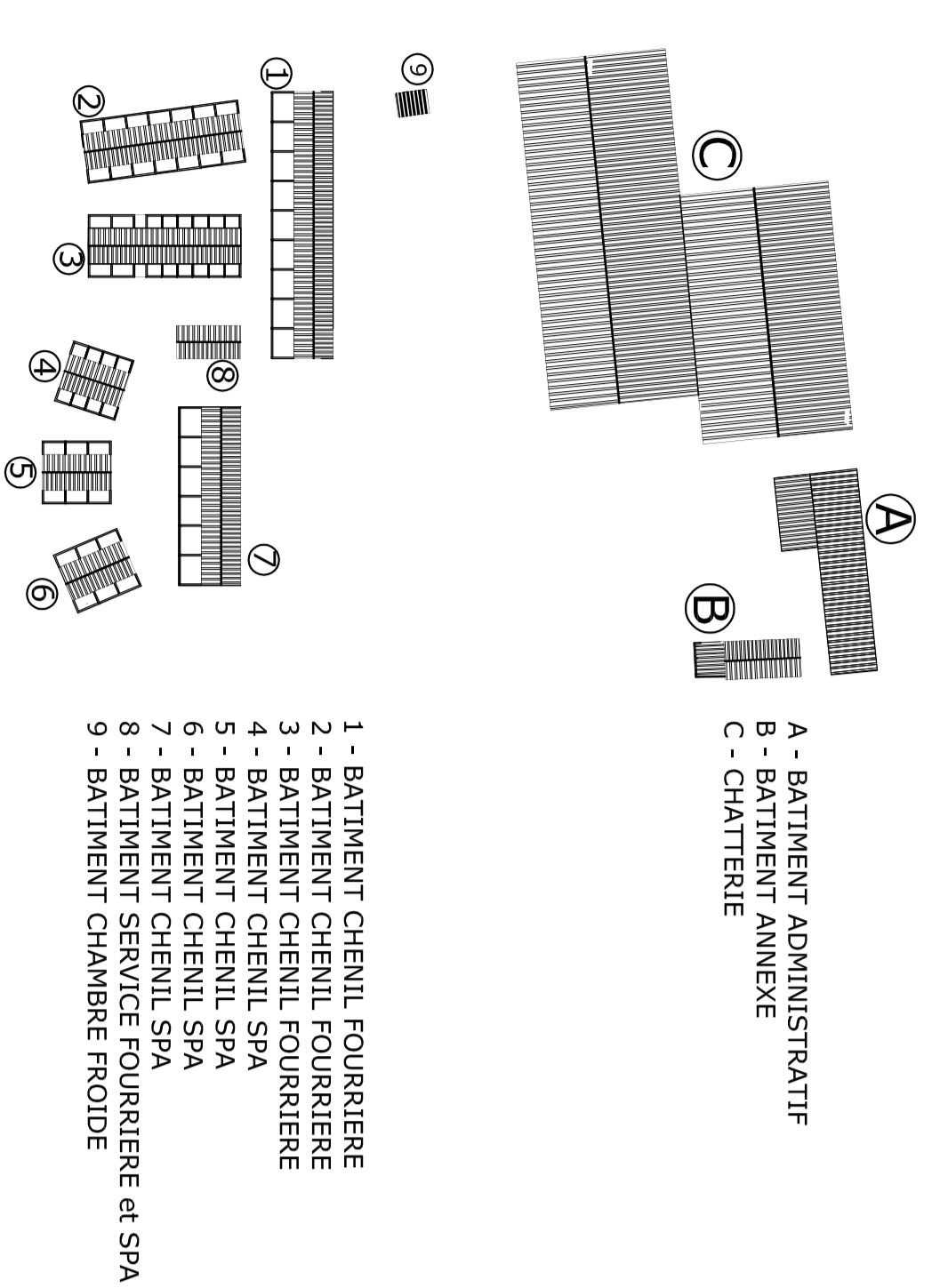
MAITRE D'OUVRAGE  
ASSOCIATION DE SAUVAGARDE DE PROTECTION DES ANIMAUX  
DE BERGERAC, DE LA DORDOGNE ET DU SUD-OUEST

Commune de BERGERAC

Construction d'un refuge SPA et d'une fourrière

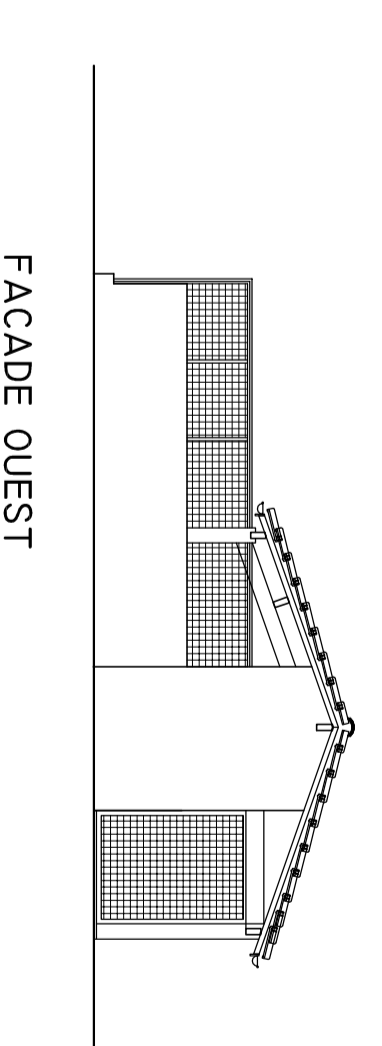
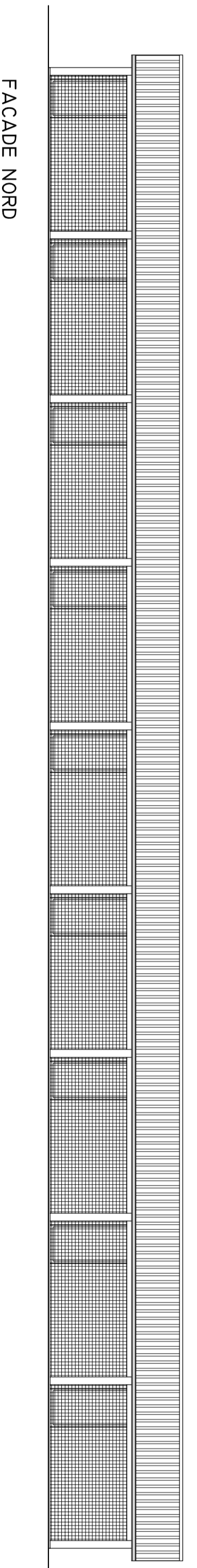
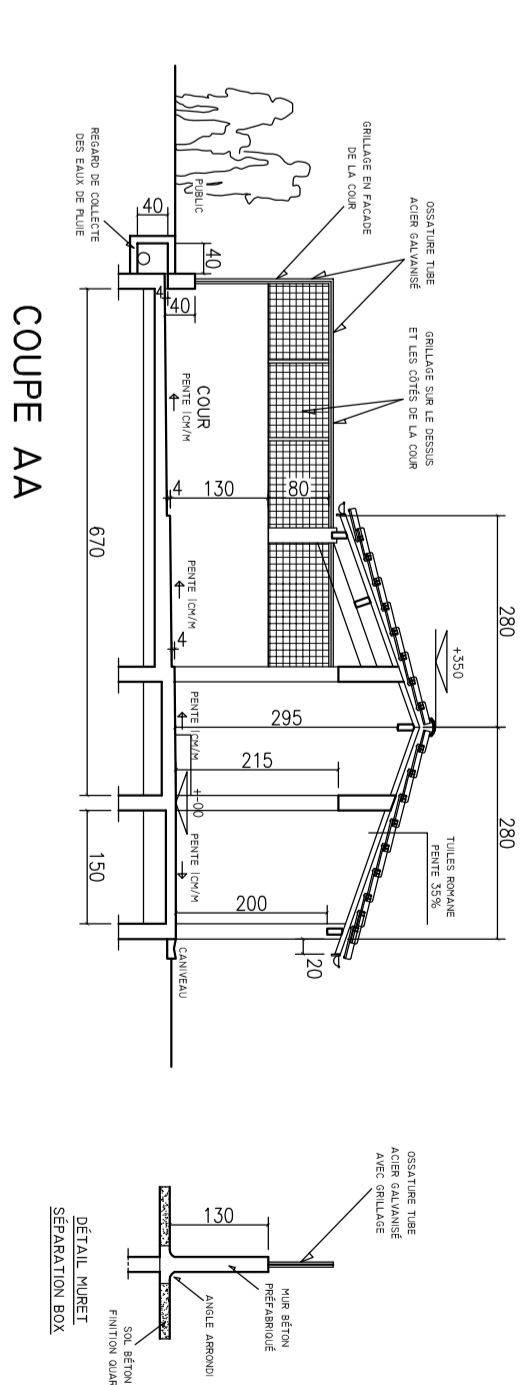
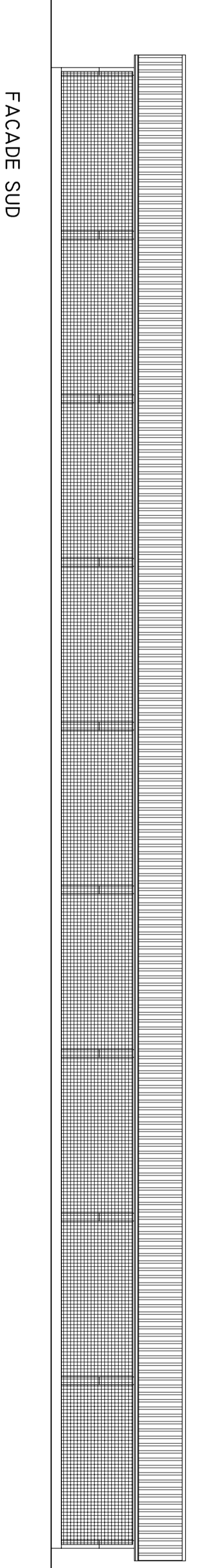
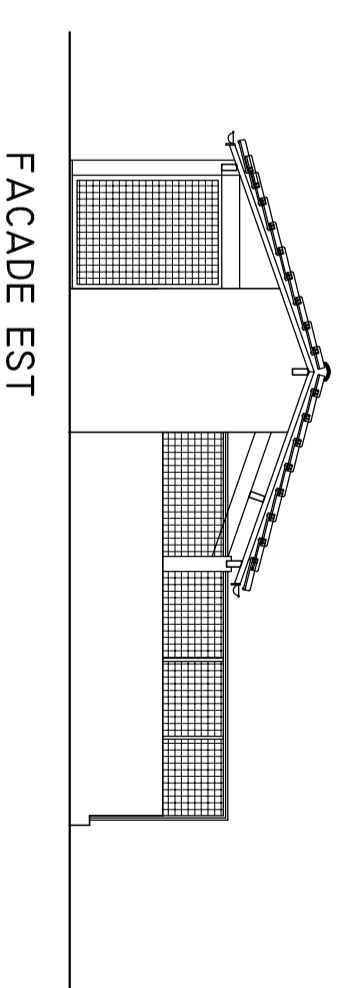
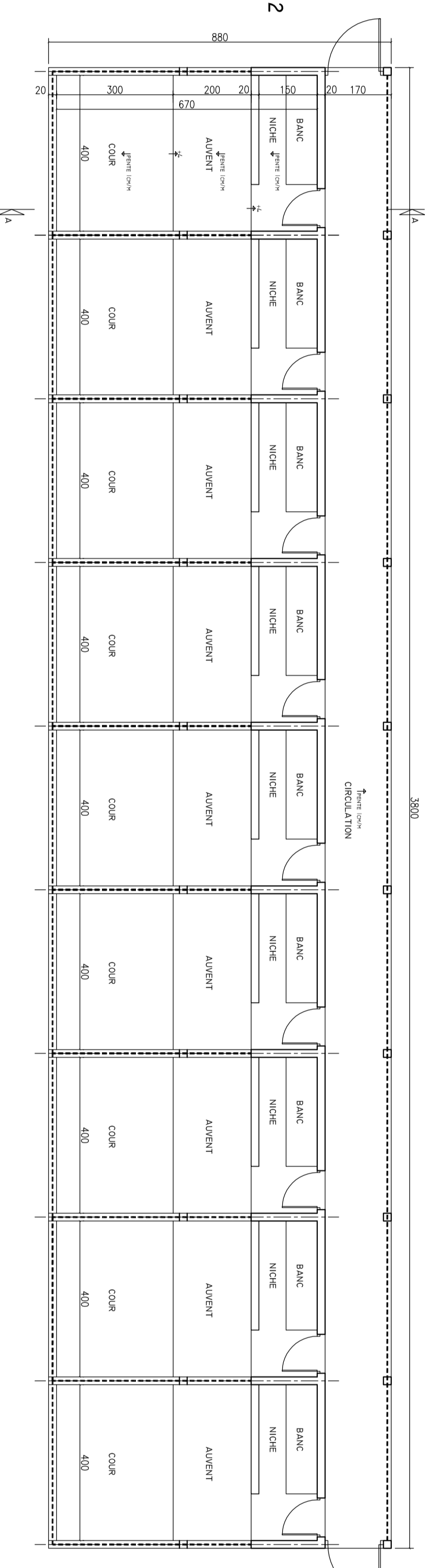
Benoit SALLU - ARCHITECTE - 58, rue W. ROUSSEAU - 24100 BERGERAC	PLANS COUPES FACADES	APD ECH. 1/100 DATE JANV 2016
---	----------------------------	-------------------------------------

## 5 PROJET : bâtiments 1.2.3.4



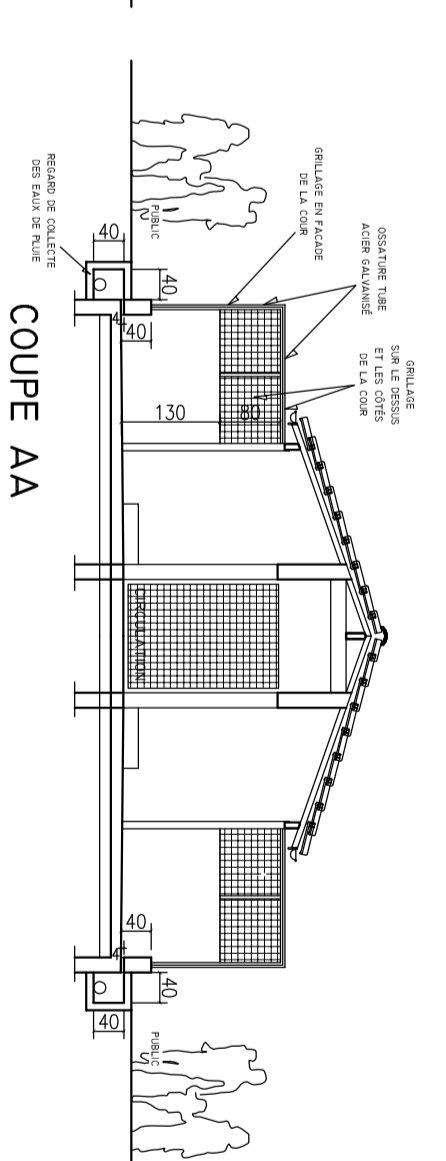
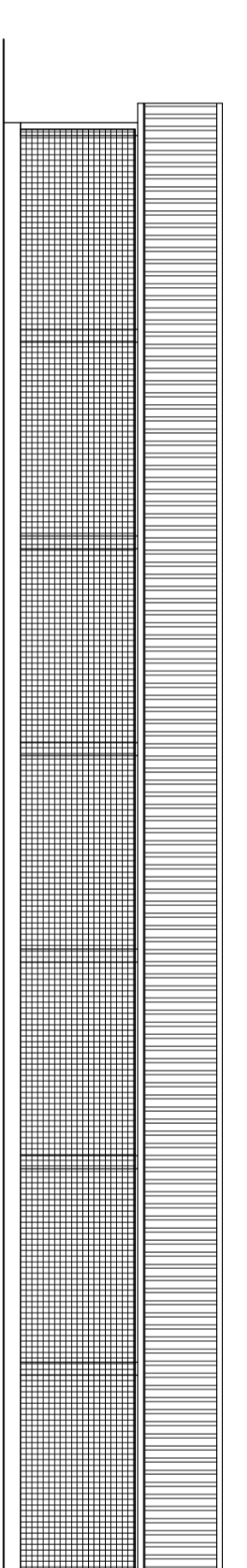
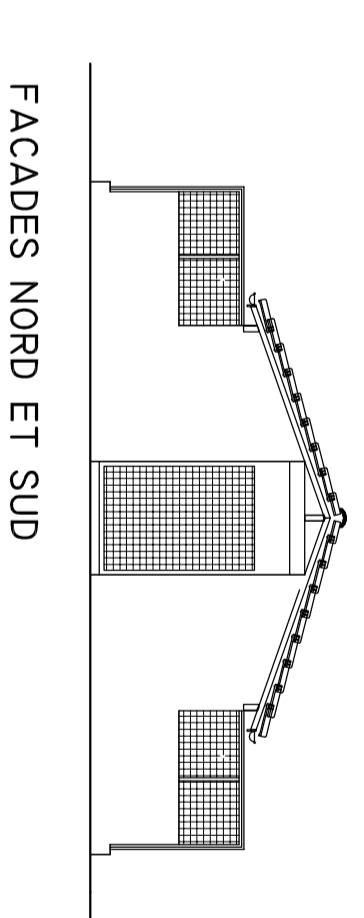
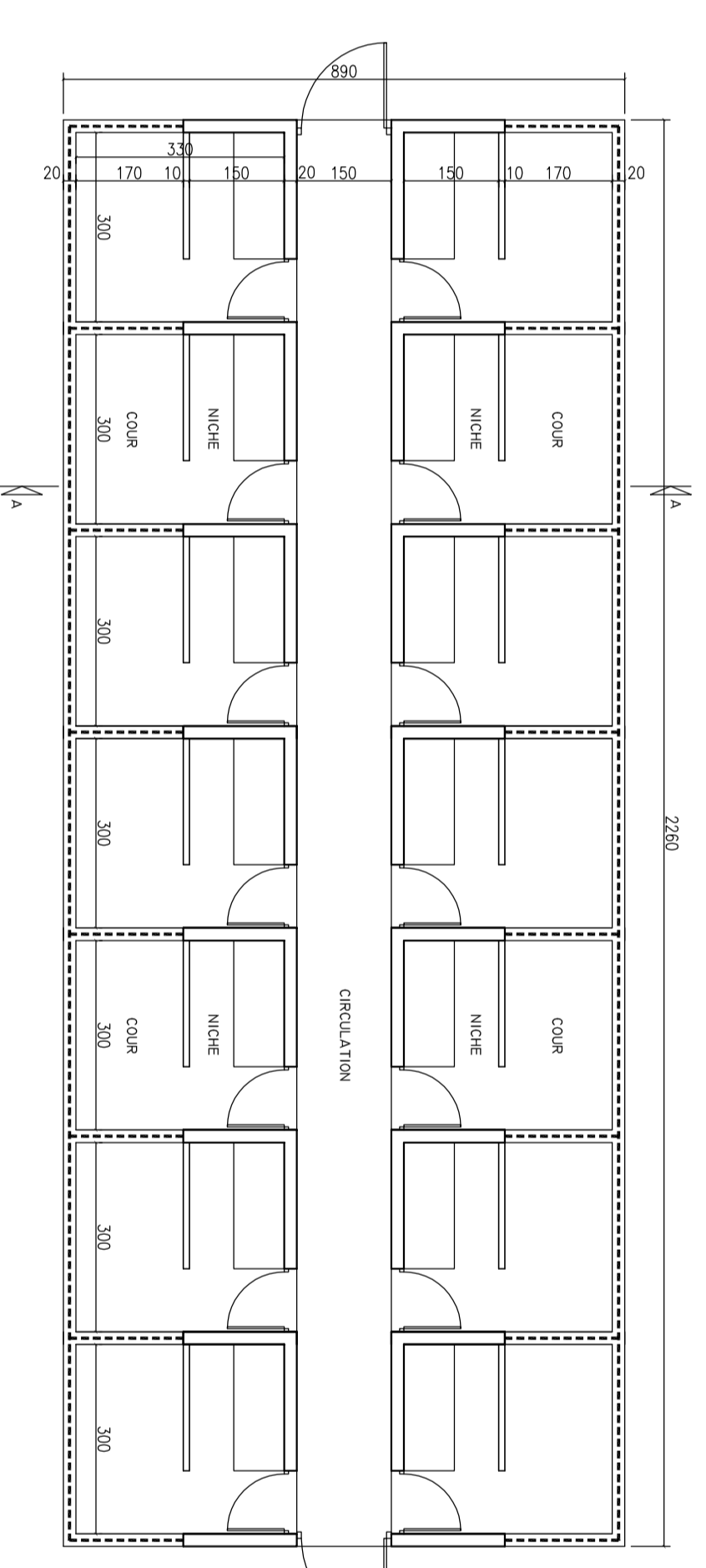
### 1

BOX 26.8m<sup>2</sup>



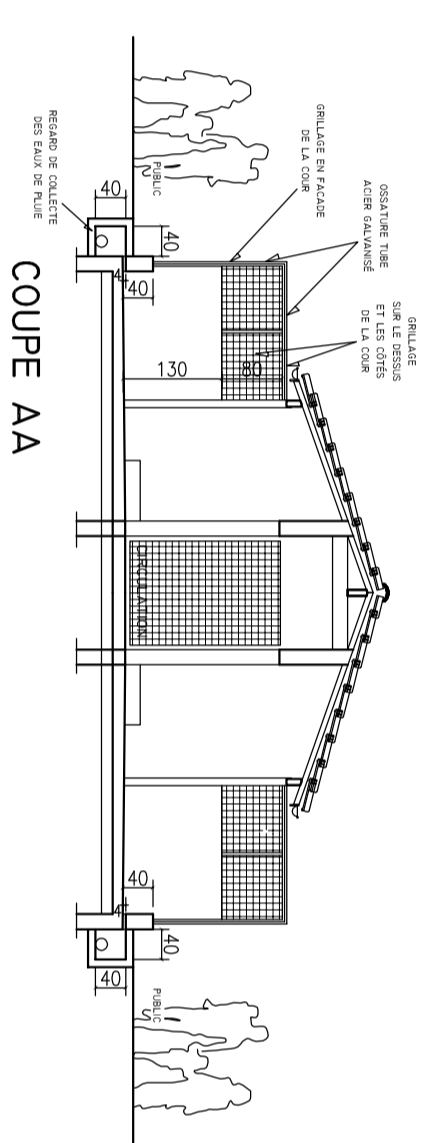
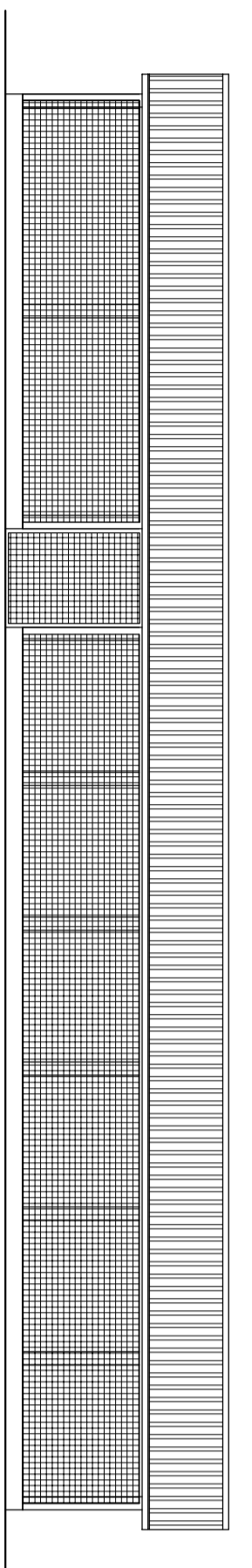
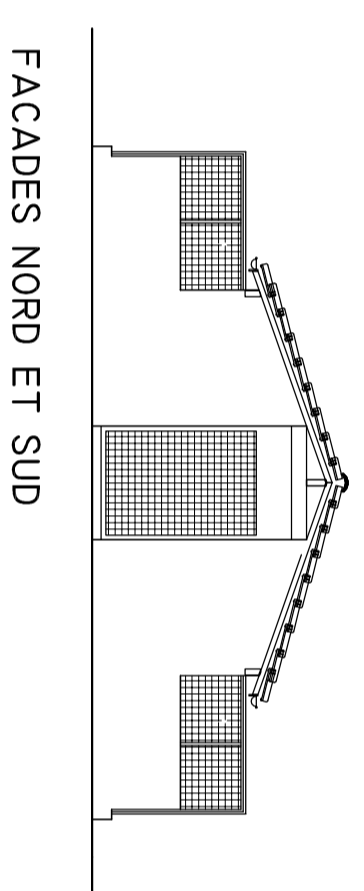
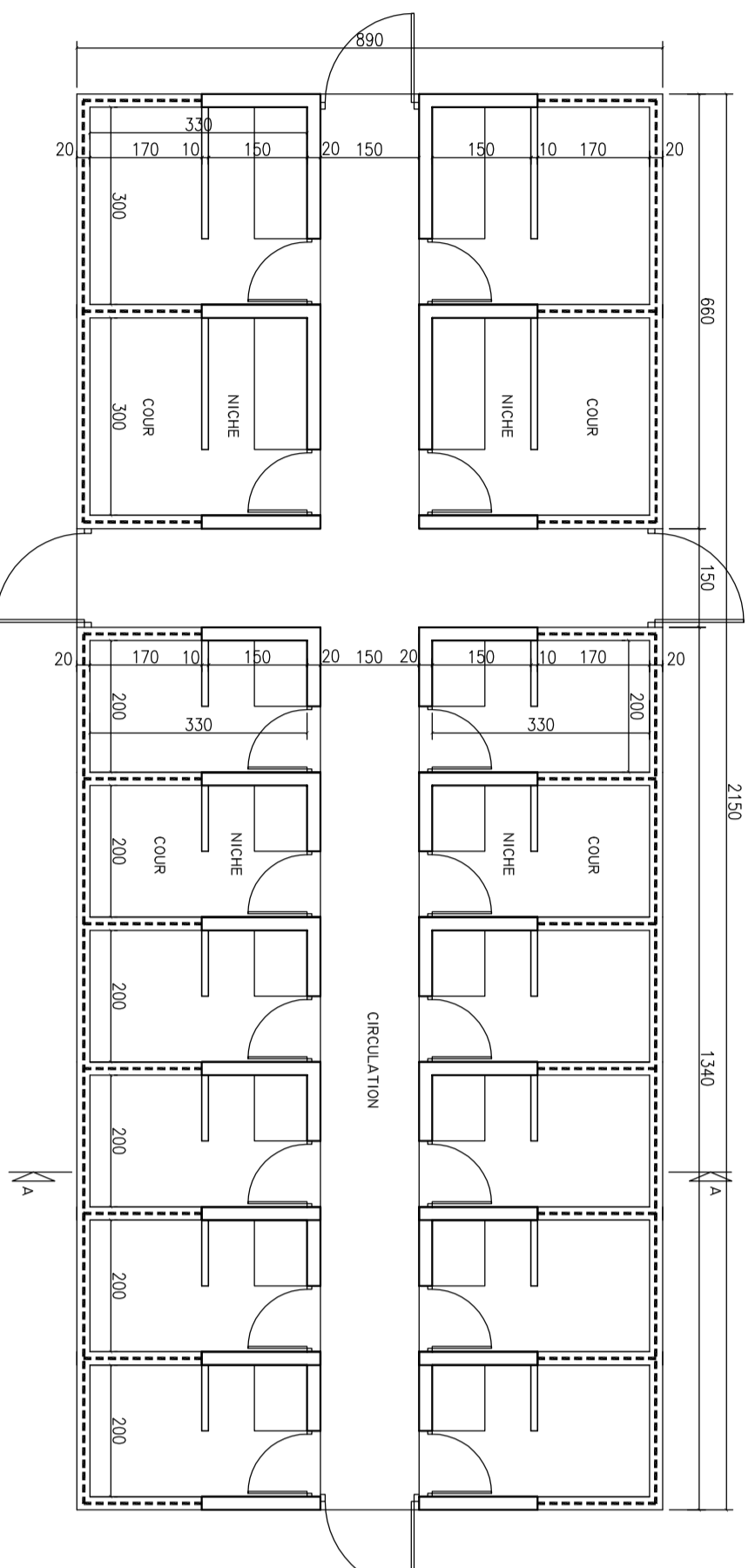
### 2

BOX 10m<sup>2</sup>



### 3

BOX 10m<sup>2</sup>  
BOX 6.6m<sup>2</sup>



### 4

BOX 6.6m<sup>2</sup>

